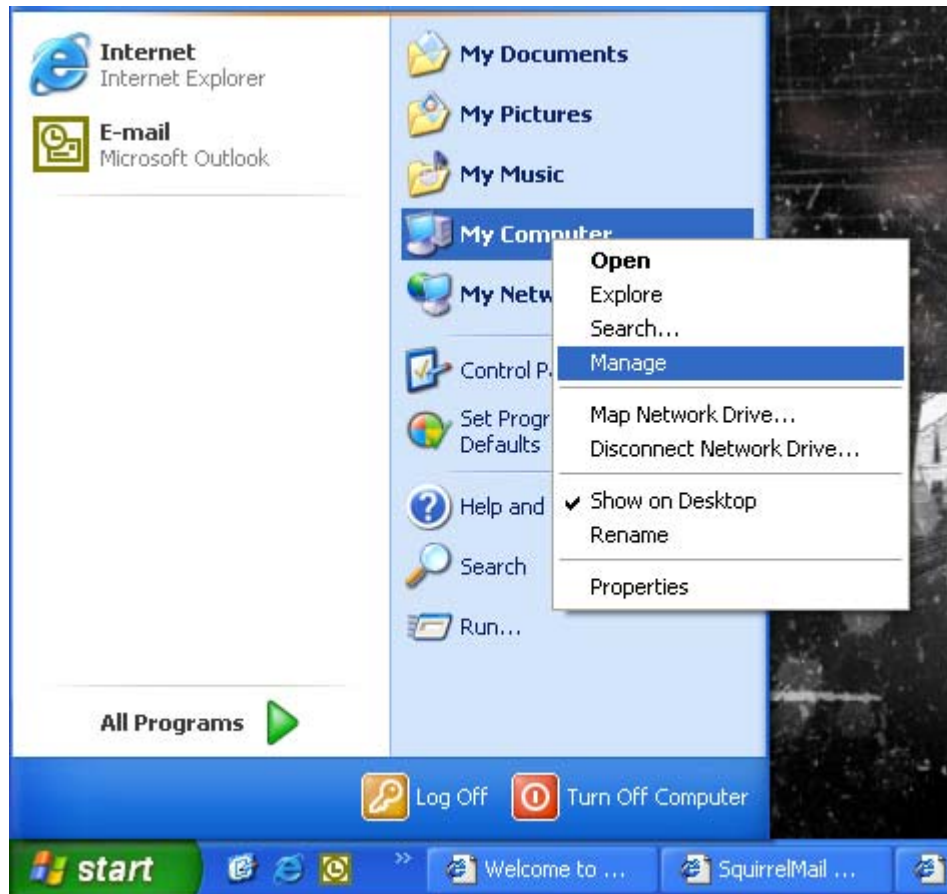


HOW TO FORMAT THE POCKETEC IN WINDOWS XP (ADVANCED)

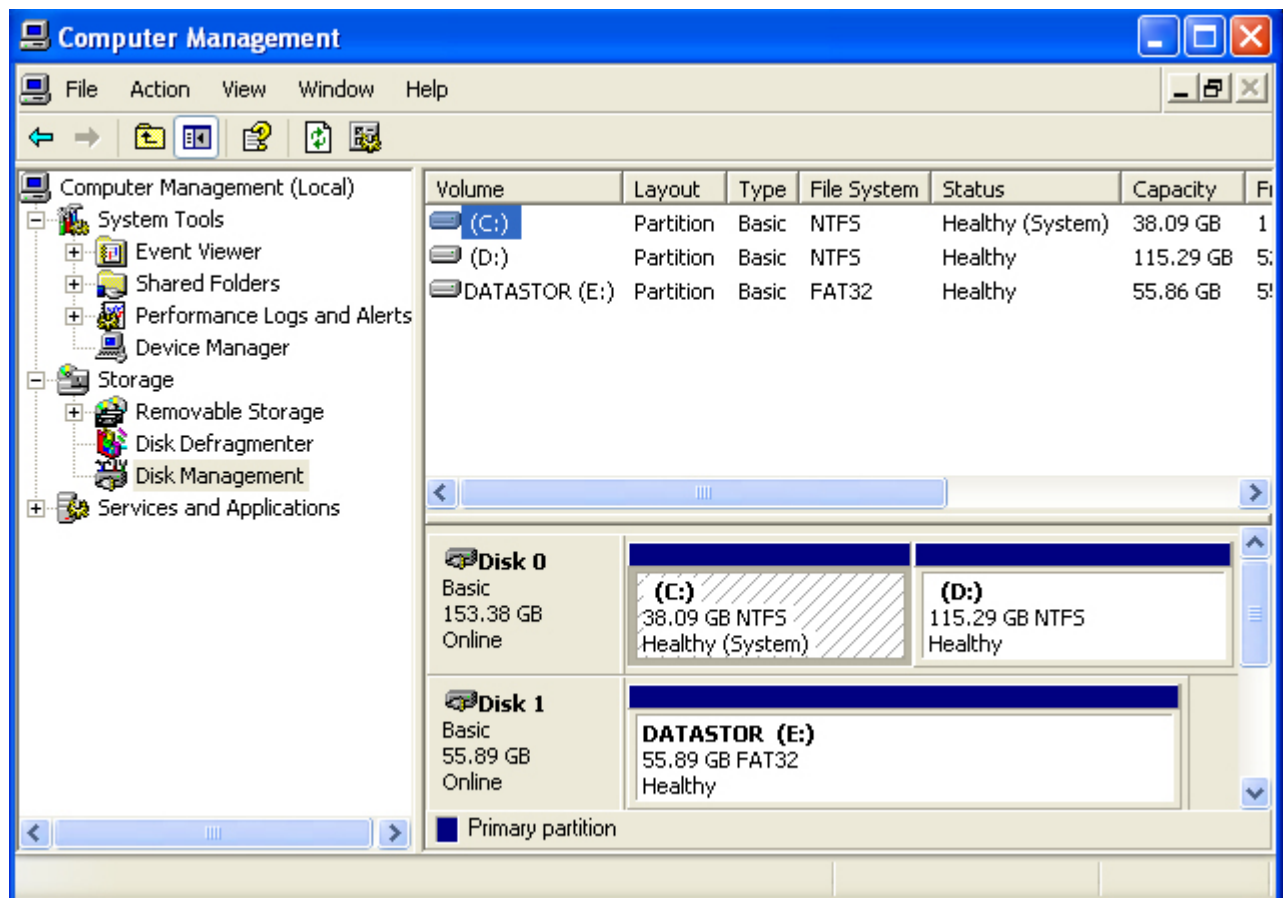


STEP 1: Plug in and Turn on the **POCKETEC drive**.

STEP 2: Open the **START** menu

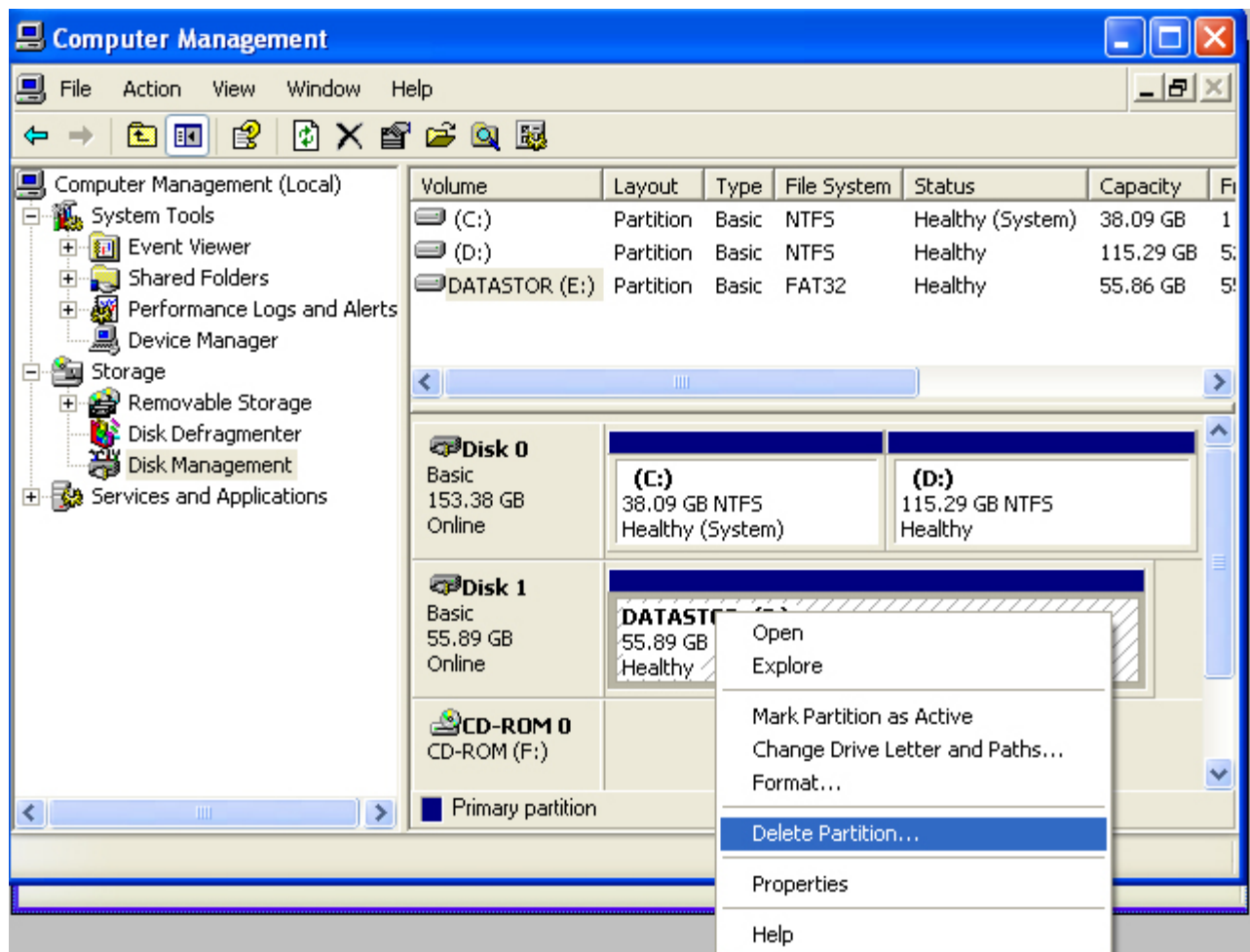
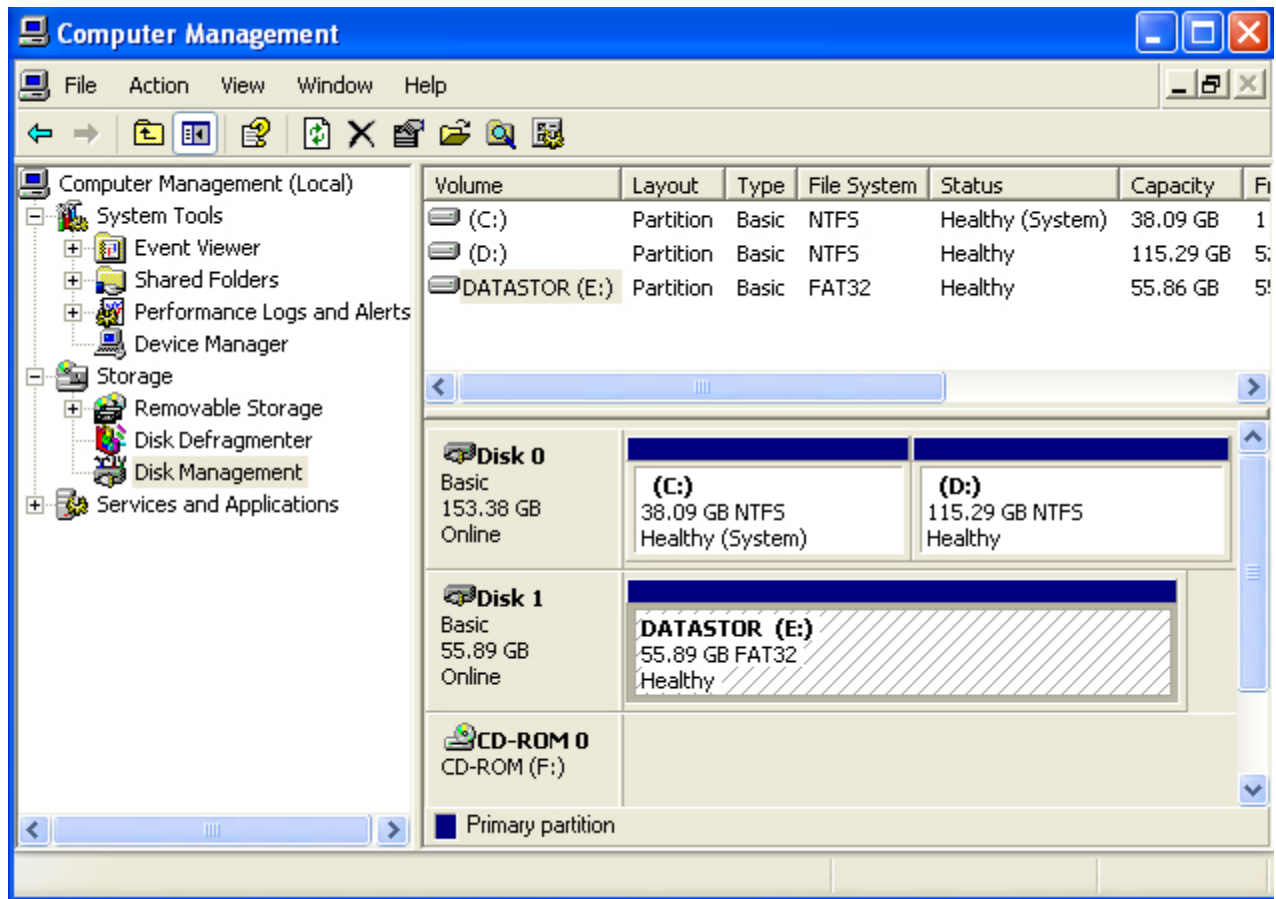
STEP 3: Right-click on the **MY COMPUTER** icon. (Tip: If the **MY COMPUTER** icon is not **START** menu, you can also Right-Click the **MY COMPUTER** icon on your **DESKTOP**)

STEP 4: Select **MANAGE** from the drop down menu.



Step 5: Select **DISK MANAGEMENT** in the **COMPUTER MANAGEMENT** window.

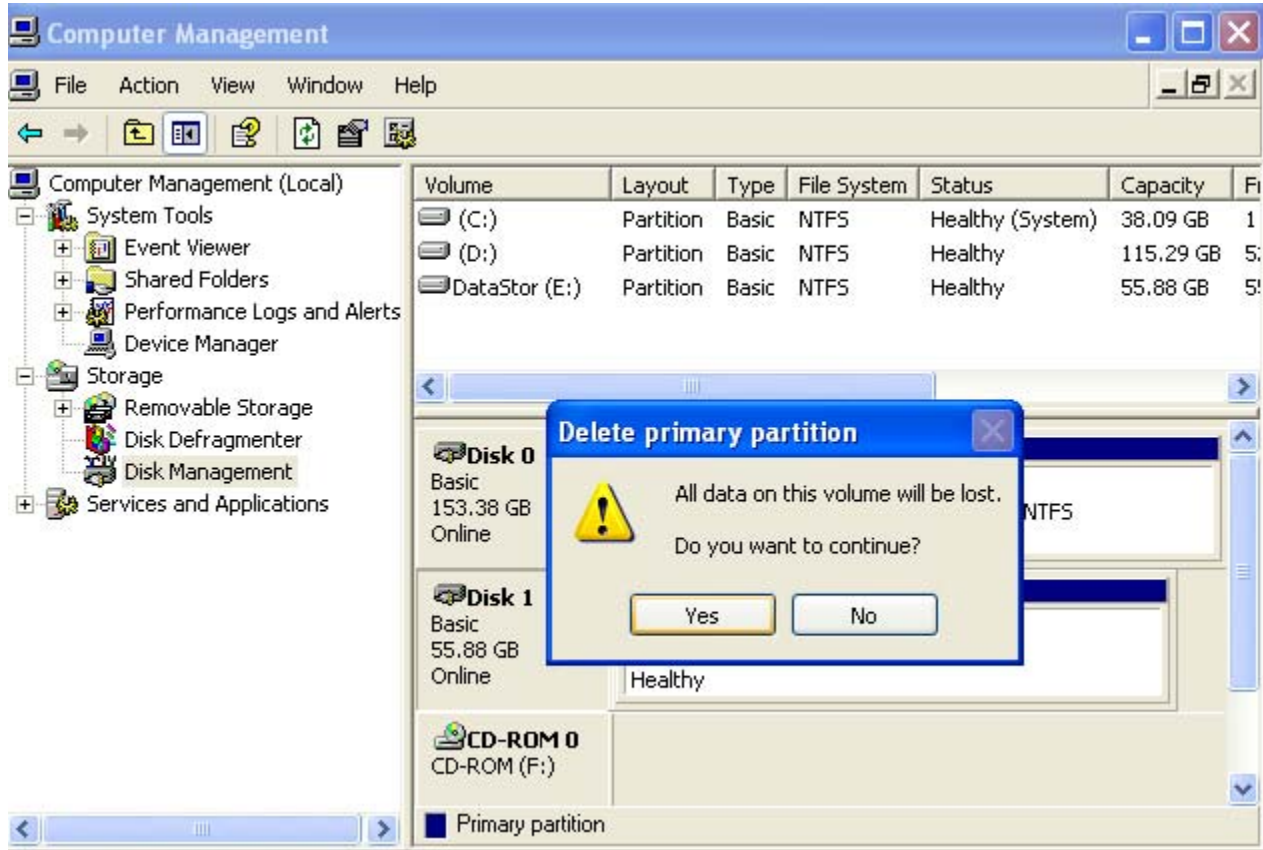
Step 6: Select the box next to the **DISK#** assignment so it becomes hashed. (See Below)

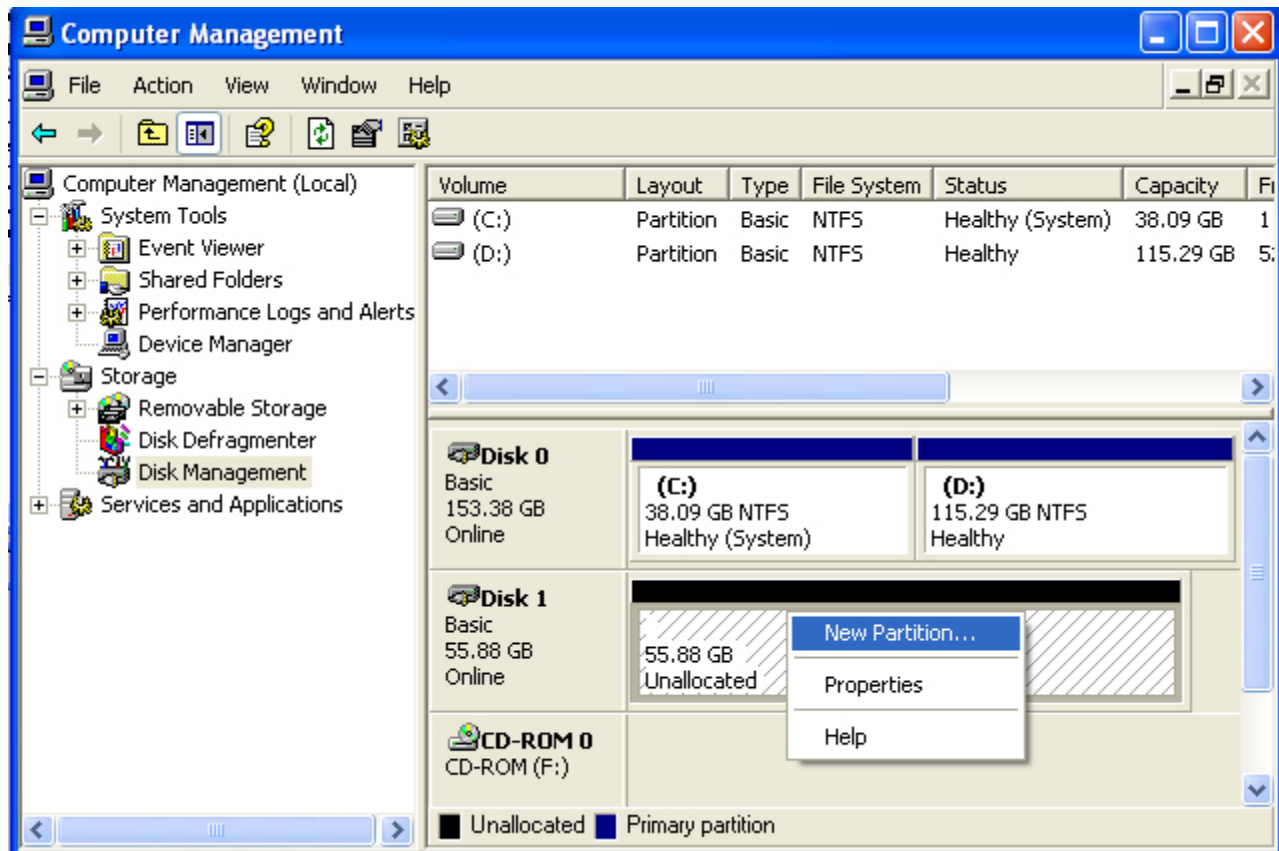


Step 7: Right-click on the box you have selected

Step 8: Select **DELETE PARTITION** from the drop down menu

Step 9: BE SURE YOU ARE DELETING THE CORRECT PARTITION BEFORE SELECTING YES

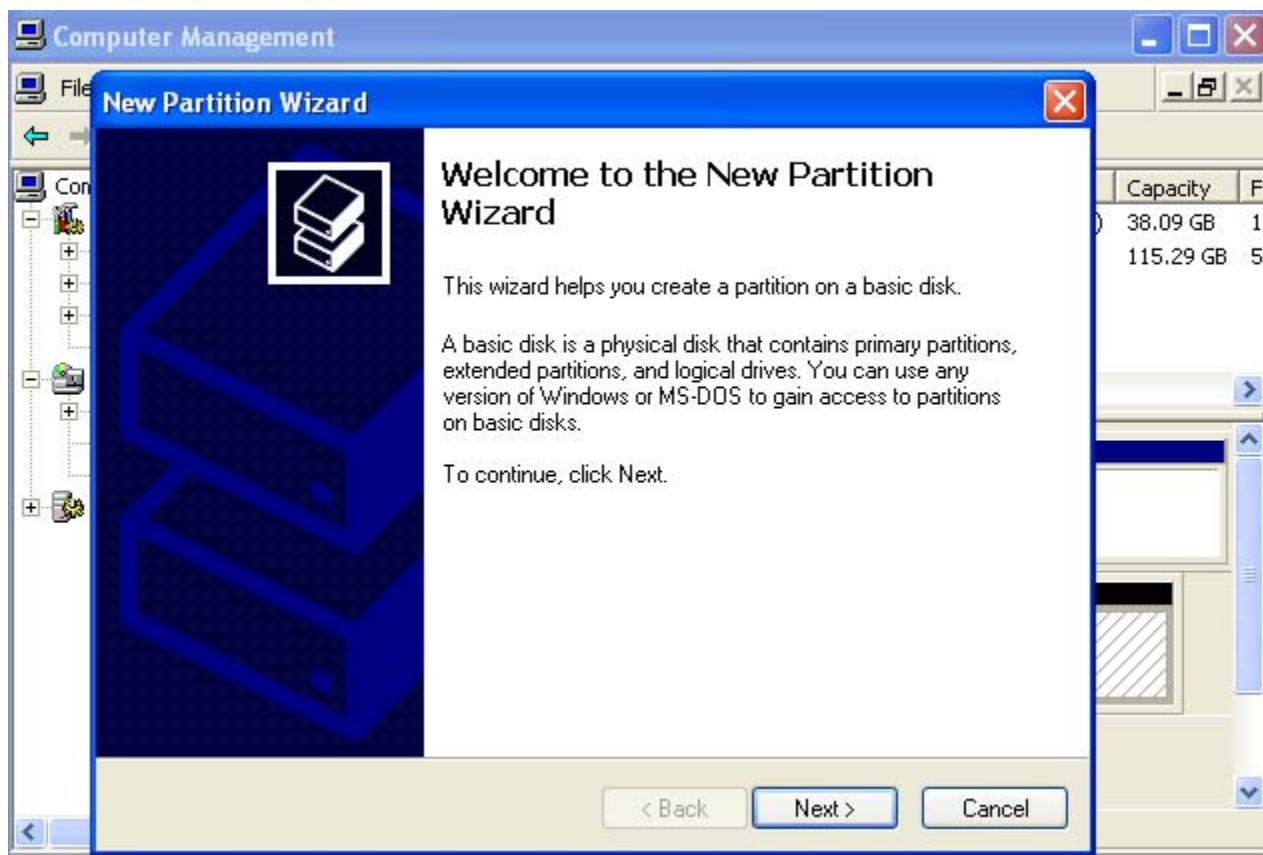




Step 10: After you have successfully deleted the partition the box will now appear as **UNALLOCATED**

Step 11: Right-click on the **UNALLOCATED BOX**

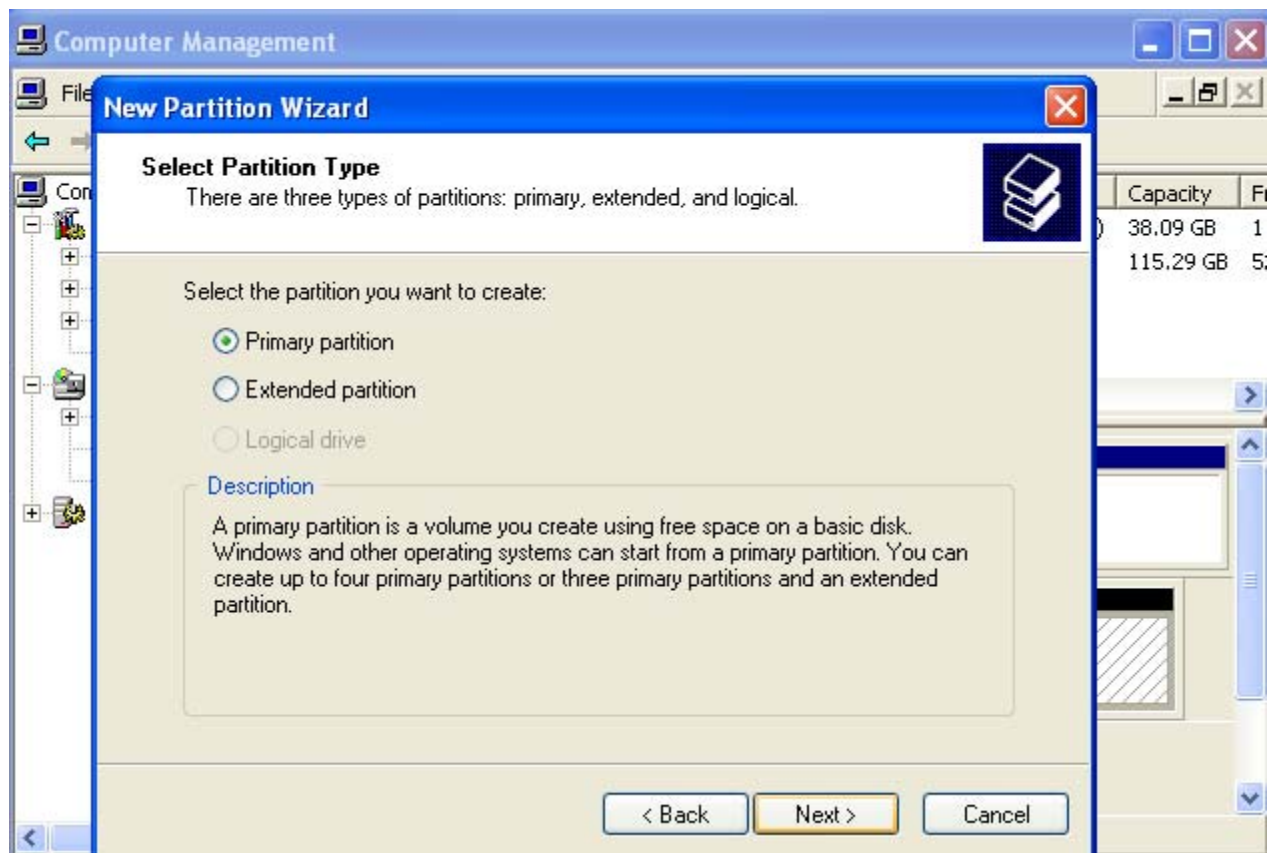
Step 12: Select **NEW PARTITION** from the drop down menu



Step 13: At the **NEW PARTITION WIZARD** window select **NEXT**

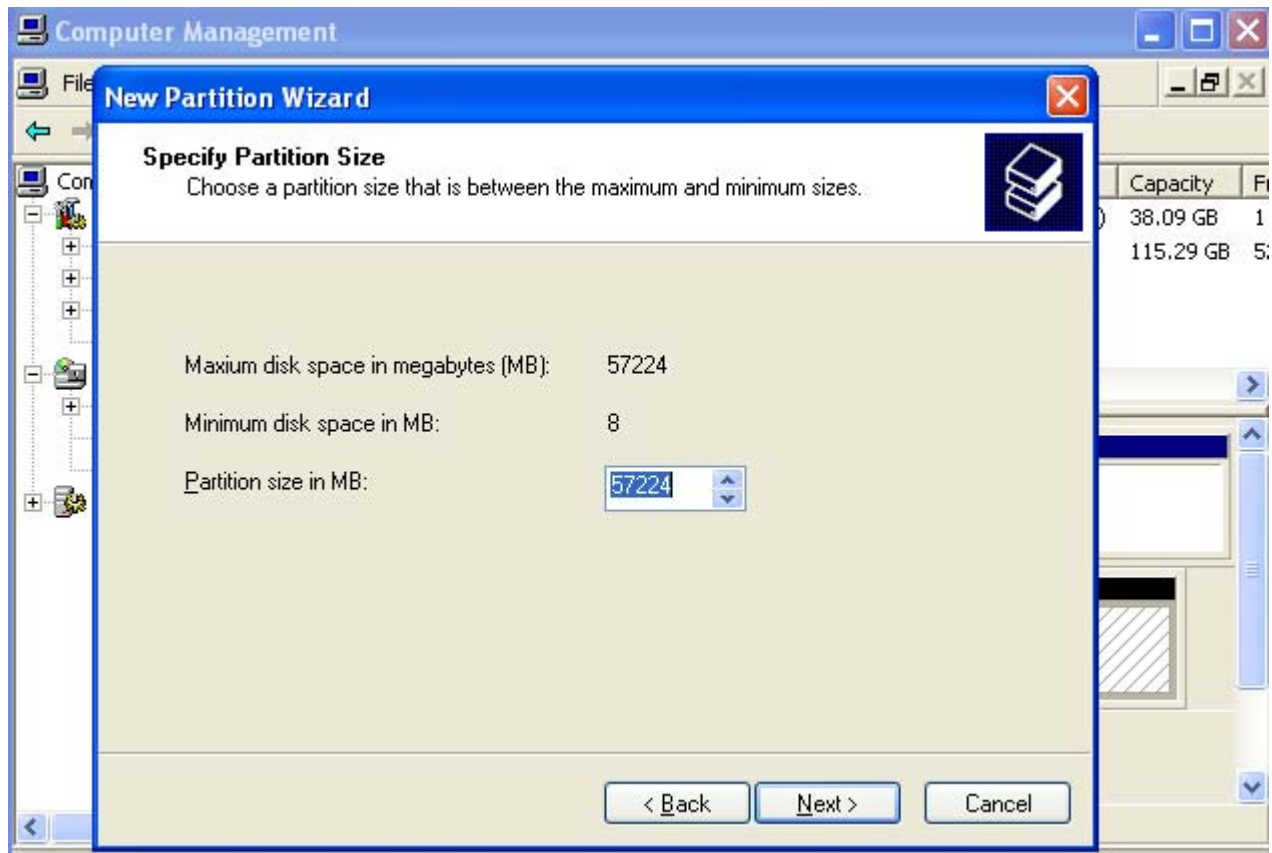
Step 14: Select **PRIMARY PARTITION**

Step 15: Select **NEXT**



Step 16: Enter the **PARTITION SIZE**, leave as **DEFAULT** if you only want 1 partition

Step 17: Select **NEXT**



Step 18: Select the drive letter to assign, if you are unsure, in a **NEW WINDOW** browse **MY COMPUTER** to see what the **NEXT AVAILABLE DRIVE LETTER IS**

Step 19: Select **NEXT**



Step 20: Select the option **FORMAT THIS PARTITION WITH THE FOLLOWING SETTINGS**

Step 21: File System will automatically default to **NTFS** with any volume size larger than 32GB

Step 22: Allocation unit size should be left at **DEFAULT**

Step 23: Volume Label will appear as **NEW VOLUME**, you may change it to whatever name you want, in this example it was changed to **DATASTOR**

Step 24: **DO NOT CHECK PERFORM A QUICK FORMAT**

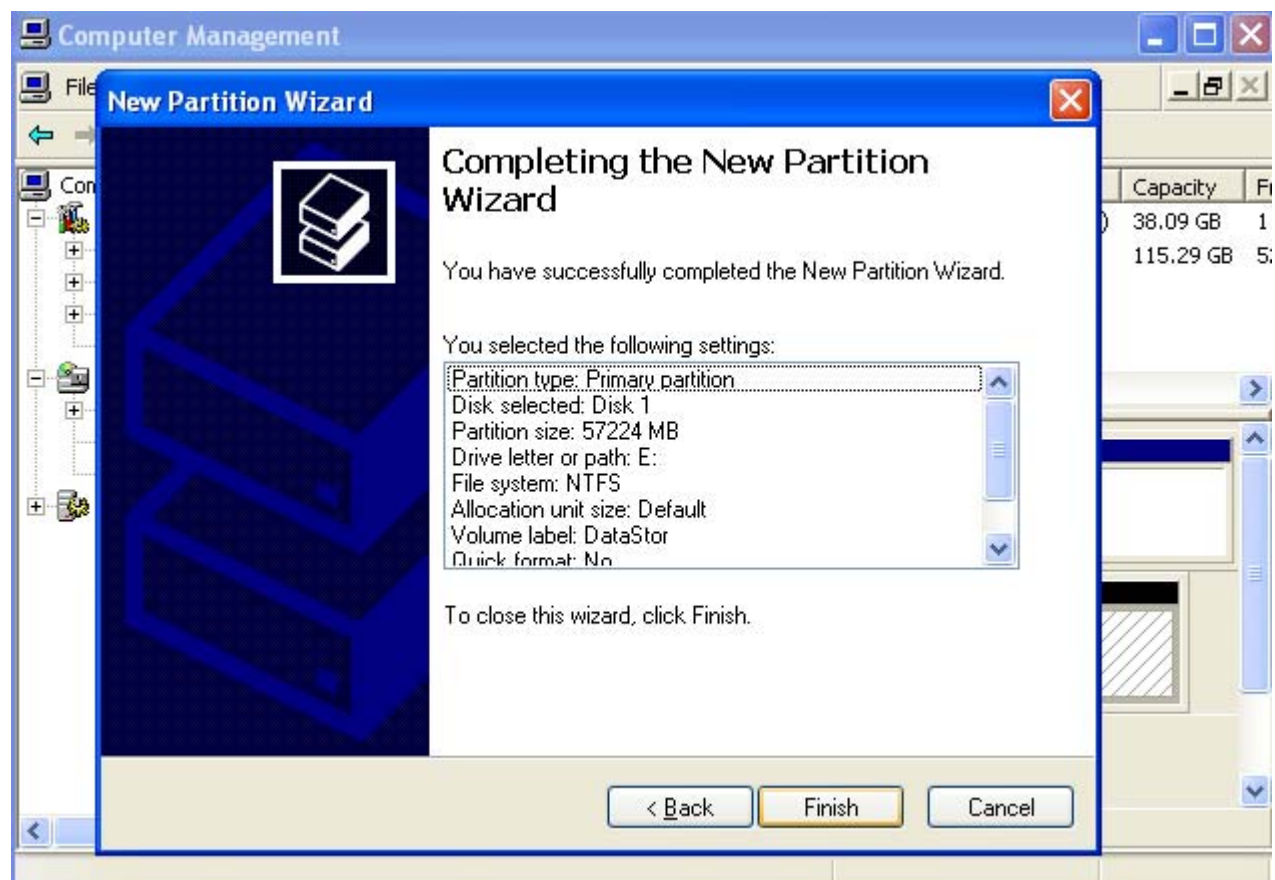
Step 25: If you wish to **ENABLE FILE AND FOLDER COMPRESSION** you may do so, however it will slow down the performance of the drive but it will also compress any file(s)/folder(s) put on to the drive.

Step 26: Select **NEXT**



Step 27: Review your selections before selecting **FINISH**

Step 28: Select **FINISH** to complete the **NEW PARTITION WIZARD**



Step 29: The drive will start to format.

Step 30: Depending on the speed of the connection and volume of the drive the format process may take up to **2 hours**.

